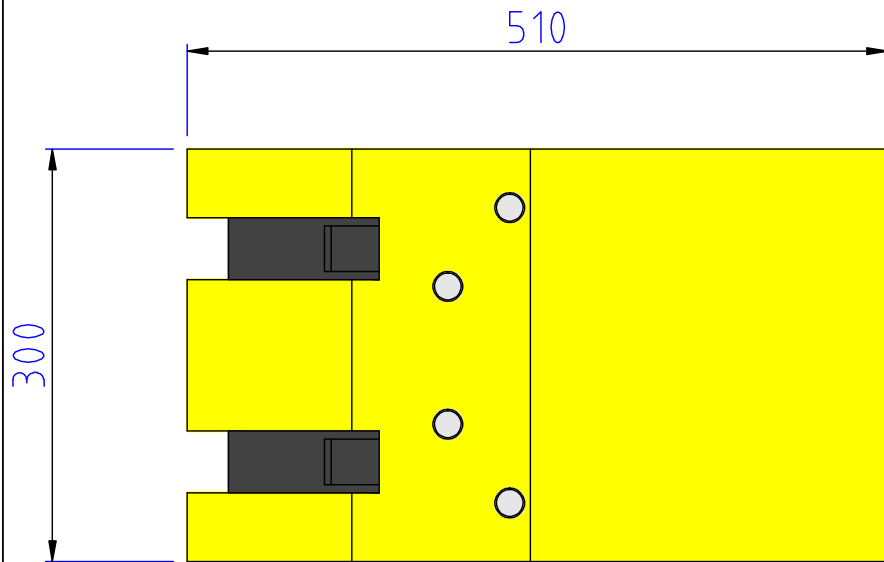
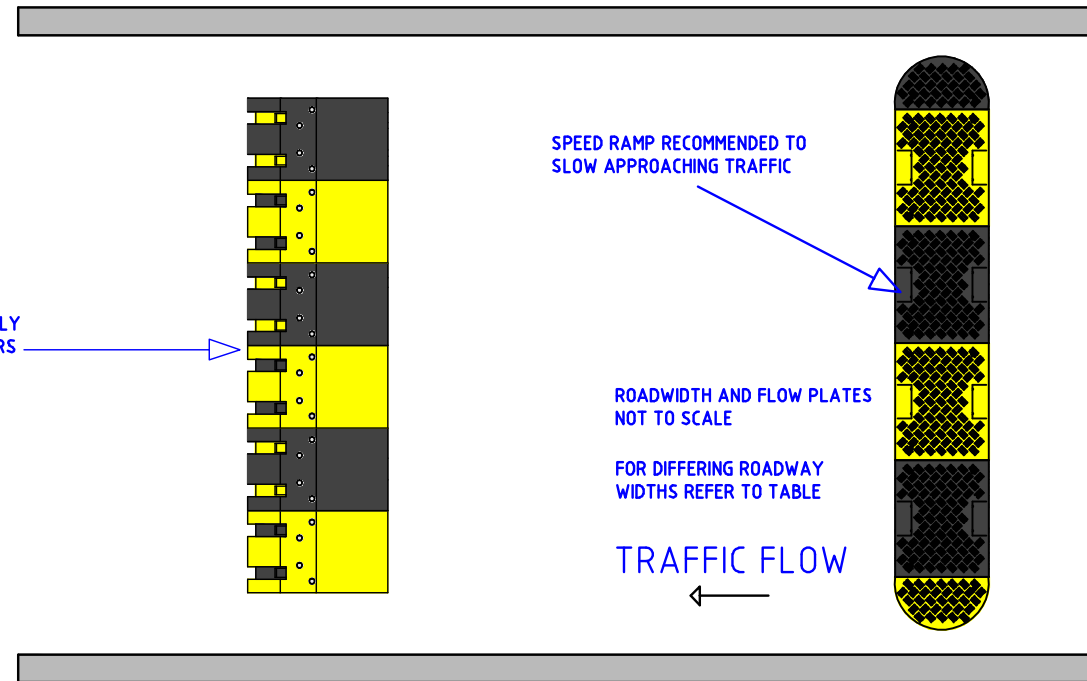


PF5850 HGV SURFACE MOUNTED TRAFFIC FLOW PLATES



HGV FLOW PLATES ARE NORMALLY PROVIDED IN ALTERNATE COLOURS AS SHOWN.

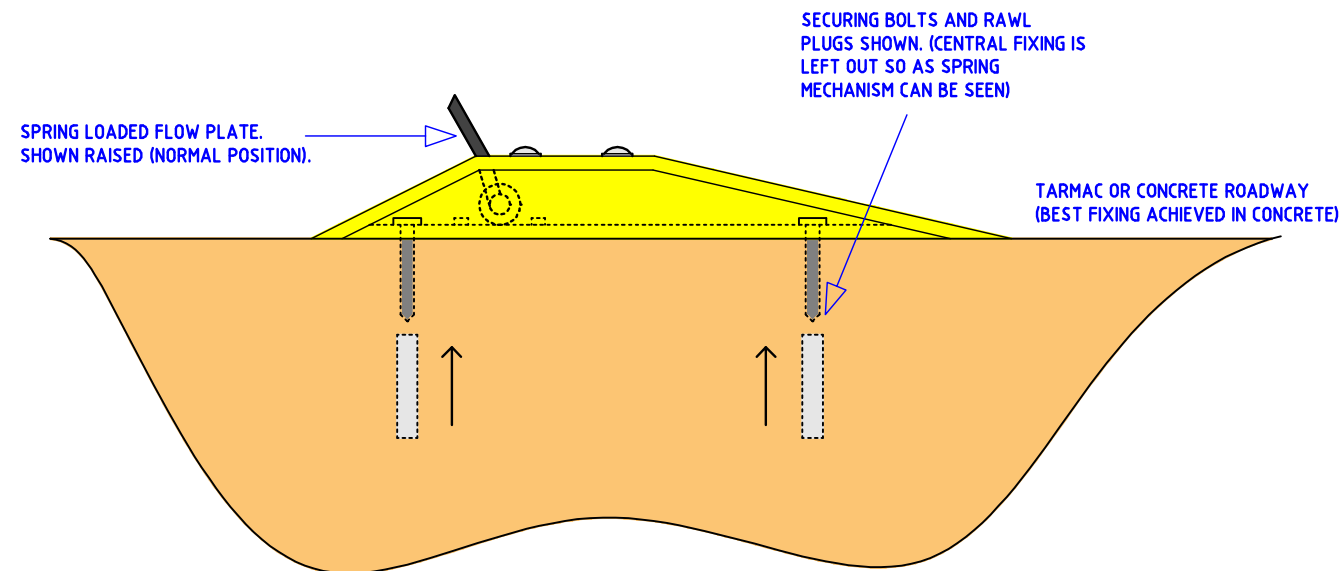
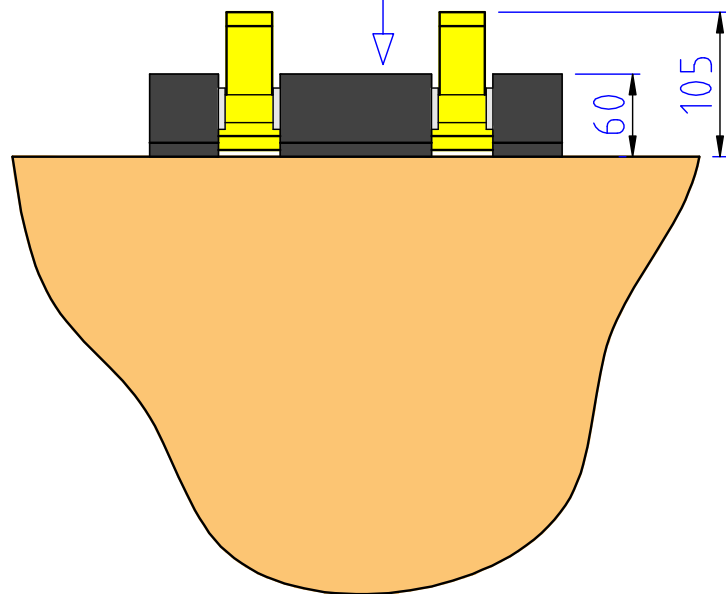


TRAFFIC FLOW CONTROL PLATES ARE DESIGNED TO ENCOURAGE ONE WAY TRAFFIC FLOW AND PREVENT UNAUTHORISED ENTRY/EXIT WITHIN ANY LOCATION.

MANUFACTURED FROM HEAVY STEEL PLATE, WITH NOISE REDUCTION BUFFERS TO ALLOW SMOOTH OPERATION.

AVAILABLE IN STANDARD YELLOW/BLACK POWDER COATING WITH YELLOW/BLACK POWDER COATED TEETH.

HGV FLOW PLATES ARE AVAILABLE IN BLACK/YELLOW POWDER COATING AS SHOWN.



ROAD WIDTH METRIC (mm)	IMPERIAL (FEET)	NO. OF PLATES
2000	6.56'	5
2500	8.20'	7
3000	9.84'	8
3500	11.48'	10
4000	13.12'	12
4500	14.76'	13
5000	16.40'	15
5500	18.05'	17
6000	19.69'	18



UNIT 1, KINGSBURY LINK,  
TRINITY ROAD, TAMWORTH,  
STAFFORDSHIRE, B78 2EX  
TEL: 08451 771122, FAX: 08451 771133  
Email: sales@parkingfacilities.co.uk

<b>DRAWN BY :</b>	STUART RUSSELL	<b>TITLE : PF5875 HGV SURFACE MOUNTED FLOW PLATES</b>			
<b>DATE :</b>	18/03/2009				
<b>SCALE :</b>	SCHEMATIC	<b>DRAWING NUMBER :</b>	PF5875	<b>REVISION :</b>	1