

# PF6000S Automatic Barrier

PF6000S



## Product Information

### Specification

CE Approved

### Material Construction

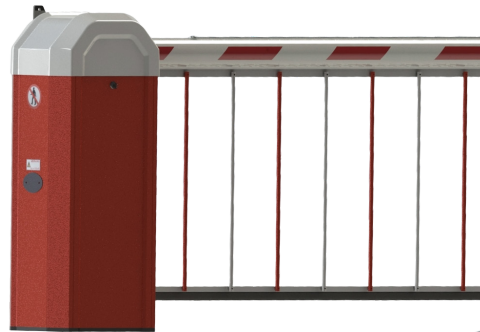
Aluminum & Polyester Powder Coated  
(Standard red + white)

### Operation Speed

8 to 22 Seconds

### IP Rating

Ip56

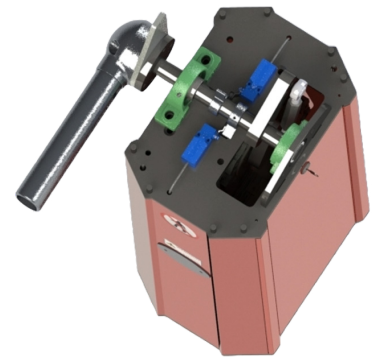


## Description

Our designs use the latest technology to maintain the barriers smooth operation, via an integral frequency inverter driven motor and gearbox drive, which only requires a single phase supply, providing a smooth consistent operation. It is controlled by a Feig Control Board, which can be programmed to suit any site configuration & form of access control requirements, therefore allowing speedy installation and no return visits to modify the programmes.

The power input to our automatic barrier is 230v controlling a three phase motor, hence enables us to offer reliability and high torque. With this control panel and gearbox design, we do not require any springs or counterweights to assist in the operation of the barriers.

Our aluminium externally placed control cabinet has been designed to stand out from the rest. Its sleek looks are achieved by investing heavily into aluminium extrusions, which ensures product longevity, making it look as good as the day it was installed.



## Colours opt.

Red with white lid,  
and yellow with black lid,  
colours are standard with  
monitored safety edge.  
Custom cabinet colours are  
possible at extra cost.



## Industry standard

Our barriers have been classed as the best in the industry. It has been designed to last using the best materials and components that we can buy. As with all our products they are 100% Duty Cycle

## Absolute control

The 6000 auto barriers feature a Feig control panel that is far more advanced for safety and motion than its rivals

## Key Features

- Ease of installation
- Low maintenance
- 99% Access control compact
- Safe trusted program logic
- Accepts 2 8k2 CAT3 safety
- Designed and built to last
- Effective security deterrent

## Optional Extras

- LED Traffic lights
- Warning Siren
- Flashing beacon
- Warning Signage
- Battery Back Up (Mounted separately)

## Specific product info

### Operation Speed

3 to 7 Seconds  
(Speed WILL vary dependent upon barrier configuration)

### Duty Cycle

100% Heavy Industrial Usage

### Specification

UKCA + CE Approved

### Power Requirements

Single Phase 240v 50Hz 10 Amps

### Maximum Span Dimensions

6M plain pole only | 4.5M with bottom skirt | 5M with hi-bar

### Drive Unit

3 Phase Motor & Wormed Gearbox

### Material Construction

Aluminium & Polyester Powder Coated

### Ambient Temperature

-20°C to +60°C (+65°C with vent kit (charges apply))

### Unit Weight

Cabinet, contents and pole arm: 79Kg

### Dimensions

Cabinet: 1110mm x 404mm x 416mm  
Pole: 88.7mm x 62.5mm OVAL

### IP Rating

Ip56

### Fixings

M12 anchor shield bolts included

